



Boxart: Seweryn Fleischer

PZL W-3T SOKÓŁ

Military Transport / Passenger Helicopter

SCALE 1/48

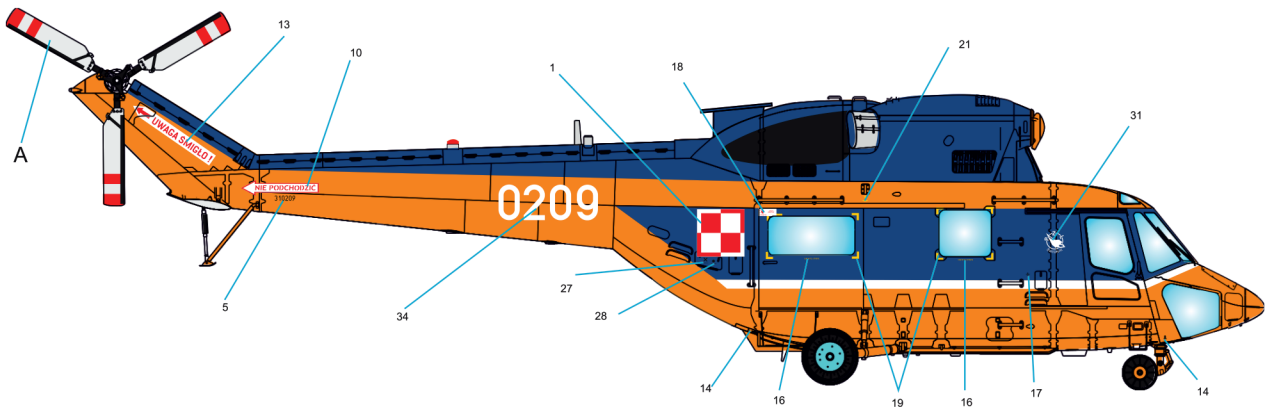
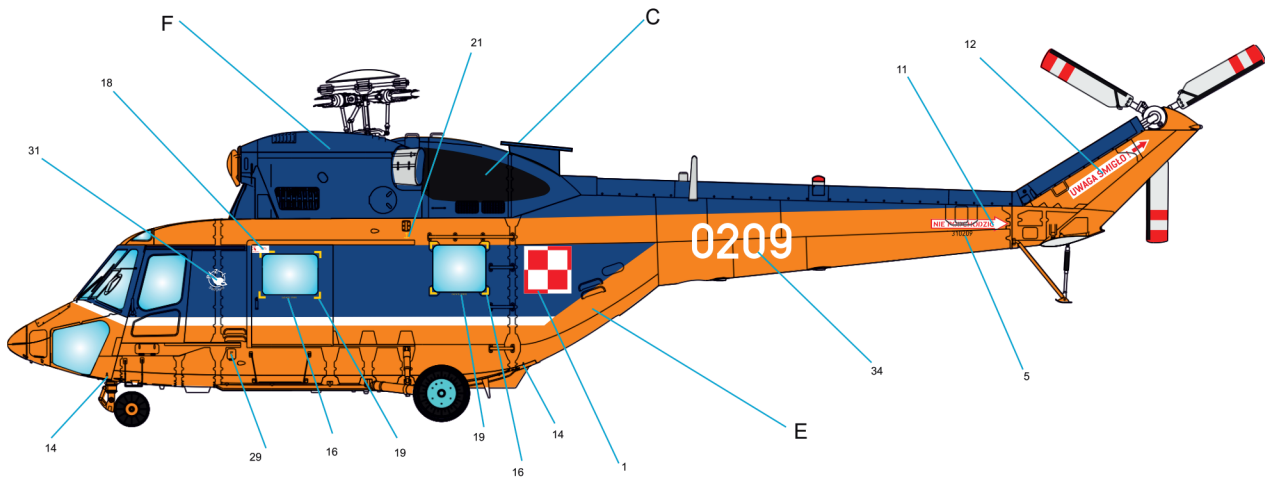
The PZL W-3 Sokół (Falcon) is a medium-size, twin-engine, multipurpose helicopter developed and manufactured by Polish helicopter company PZL-Świdnik. It was the first helicopter entirely designed and produced in Poland. Design work was performed by an in-house team led by aeronautical engineer Stanisław Kamiński. On 16 November 1979, the Sokół conducted its maiden flight. Following an intensive test programme, type certificated for the helicopter was received from aviation authorities in Poland, Russia, the United States and Germany. During May 1993, certification of the Sokol to Federal Aviation Administration (FAA) FAR Part 29 standards was granted; it was followed by the receipt of German certification during December of that year. During 1985, low rate production of the Sokół commenced. In June 1996, the 100th Sokół was completed by the company. The Sokół has been offered in a number of diverse variants and is capable of performing a typical range of helicopter, missions, including passenger transport, troop transport, attack, VIP, cargo, EMS, medevac, firefighting and search and rescue. When used in maritime environments, the rotorcraft is typically outfitted with floats, a transponder, a global positioning system navigation system, night-vision equipment, and a Lucas winch. W-3T is a basic transport and passenger variant of Sokol. Two of them was used by Polish Navy (Marynarka Wojenna). In 2017 and 2018 both naval W-3T helicopters (0209 and 0304) are upgraded for W-3WA TSAR version.

Special thanks for Mr Tomasz Bilkiewicz and Adam'Adamsky' Pękala for their vast knowledge and help in the production of this model.

PZL W-3 Sokół to śmigłowiec wielozadaniowy produkowany w zakładach PZL-Świdnik. Jest to zarazem pierwszy śmigłowiec polskiej konstrukcji, który trafił do seryjnej produkcji. Zaprojektowany przez zespół pod kierownictwem inż. Stanisława Kamińskiego, a następnie inż. Cezarego Kamińskiego. Oblot prototypu miał miejsce 16 listopada 1979 roku. Rozpoczęcie produkcji seryjnej nastąpiło w 1984 roku, a pierwszy seryjny Sokół odbył swój dziewiczy lot 29 listopada 1986 roku. Początkowo zakładano, że głównym odbiorcą śmigłowca będzie lotnictwo ZSRR, jednak pomimo prób wprowadzenia Sokoła do służby w Aeroflot zakończyły się ostatecznie niepowodzeniem. Do końca 1993 roku śmigłowiec uzyskał certyfikaty niemieckie oraz amerykańskie (FAA). Ogółem do końca 2018 roku zbudowano 178 egzemplarzy W-3 Sokół różnych wersji. Śmigłowiec W-3 Sokół był produkowany w wariantach podstawowym transportowym oraz w wielu odmianach specjalistycznych, tak cywilnych jak i wojskowych – pasażerskiej, VIP, EMS, medevac (ewakuacyjna), SAR, pożarniczej oraz bliskiego wsparcia pola walki.

Śmigłowiec W-3T Sokół jest podstawową transportową wersją używaną w Polskich Siłach Zbrojnych oraz Marynarce Wojennej. W Marynarce Wojennej służyły dwa Sokoły tej wersji – 0209 oraz 0304, głównie jako maszyny pasażerskie do transportu kadry oficerskiej. W 2017 i 2018 roku obydwie maszyny zostały poddane modernizacji do standardu W-3WA TSAR.

Specjalne podziękowania za pomoc w opracowaniu modelu oraz konsultacje merytoryczne panom Adamowi 'Adamsky' Pękale oraz Tomaszowi Bilkiewiczowi.



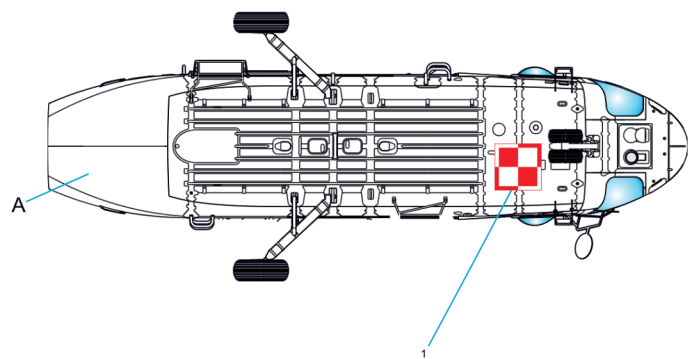
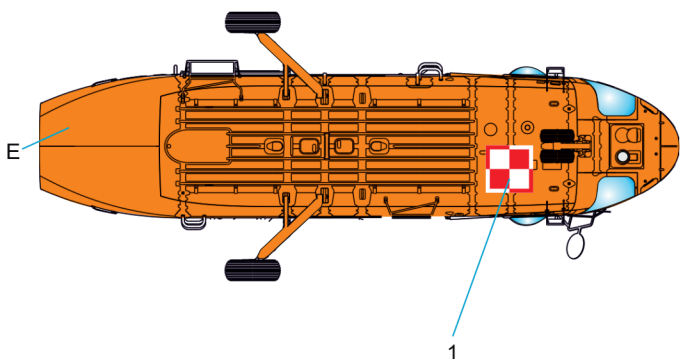
B

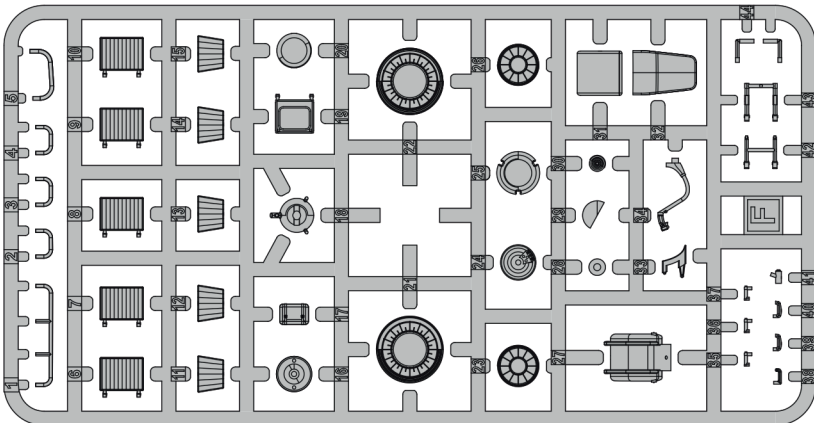
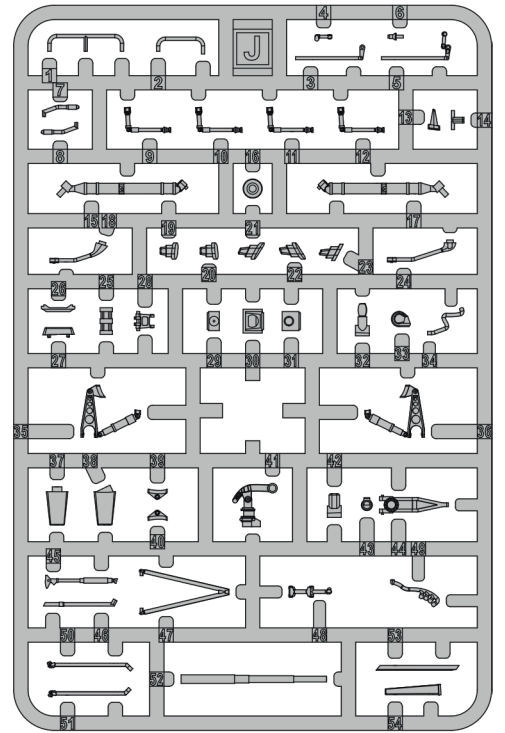
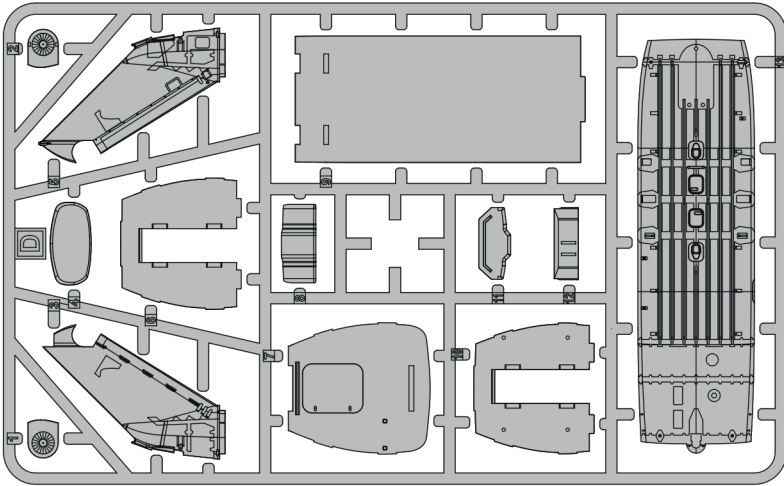
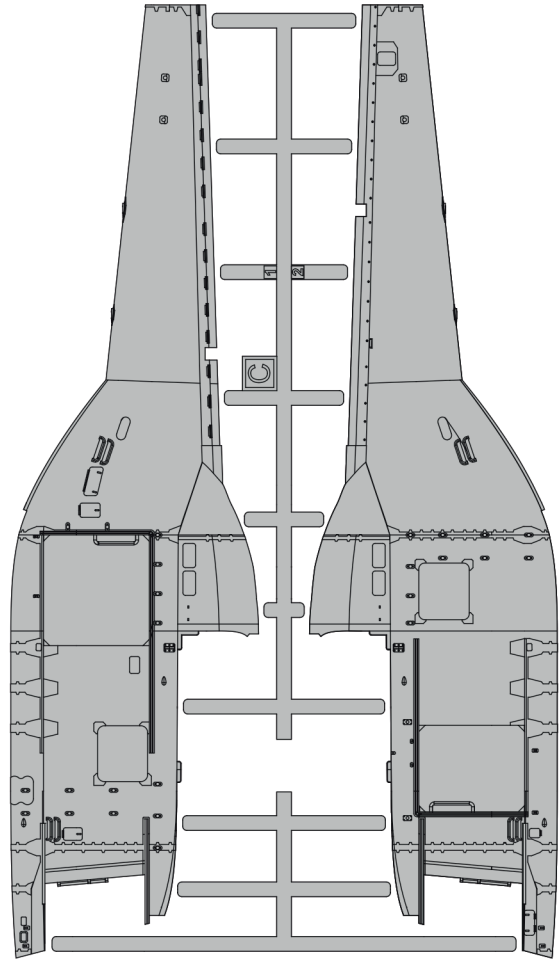
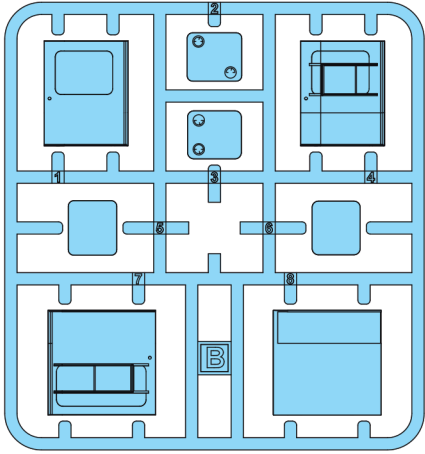
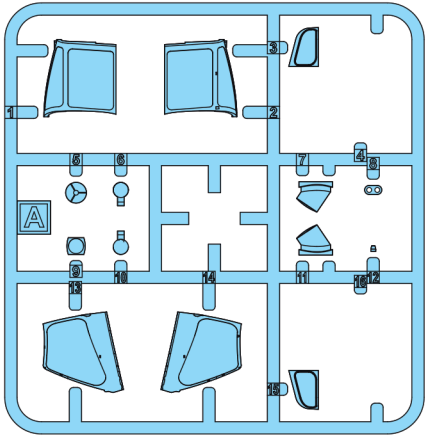
A

Adamski

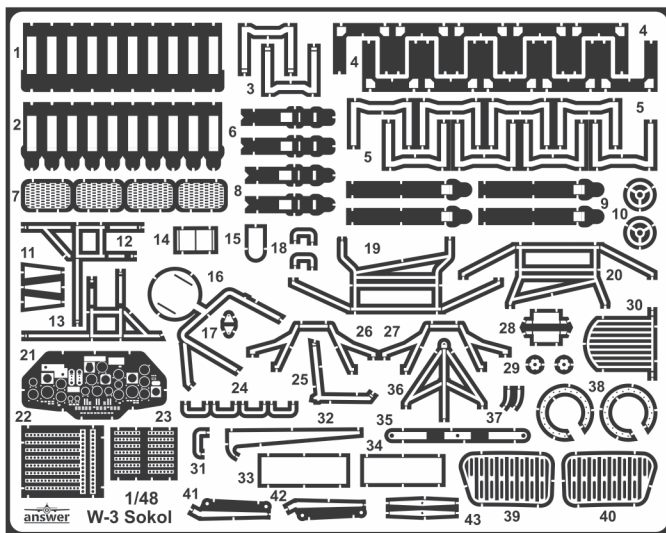
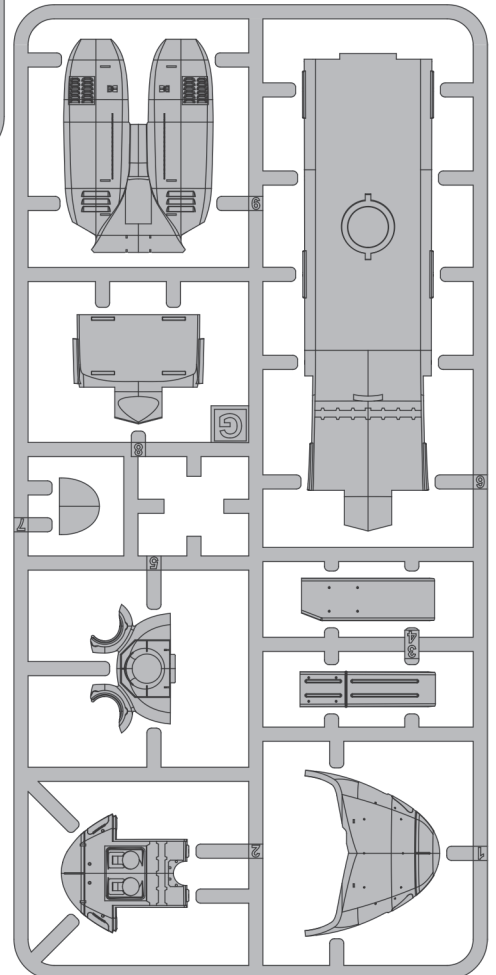
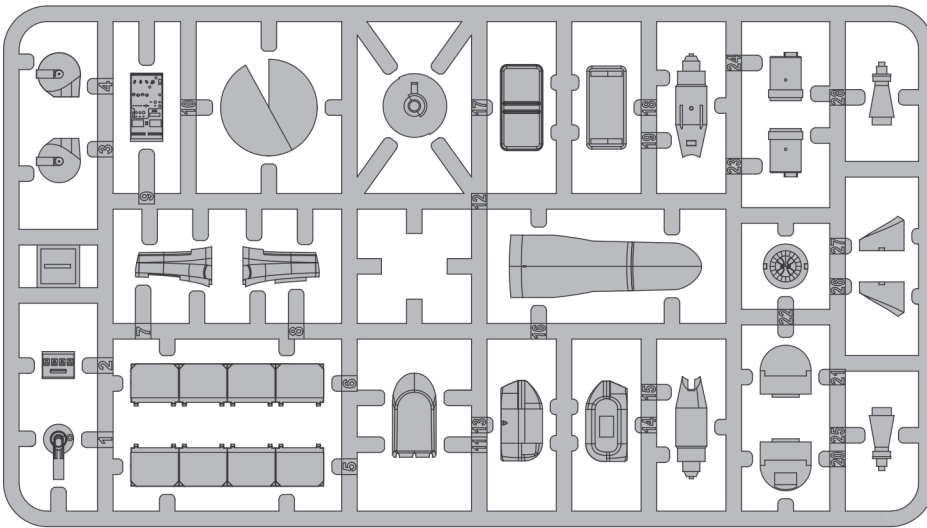
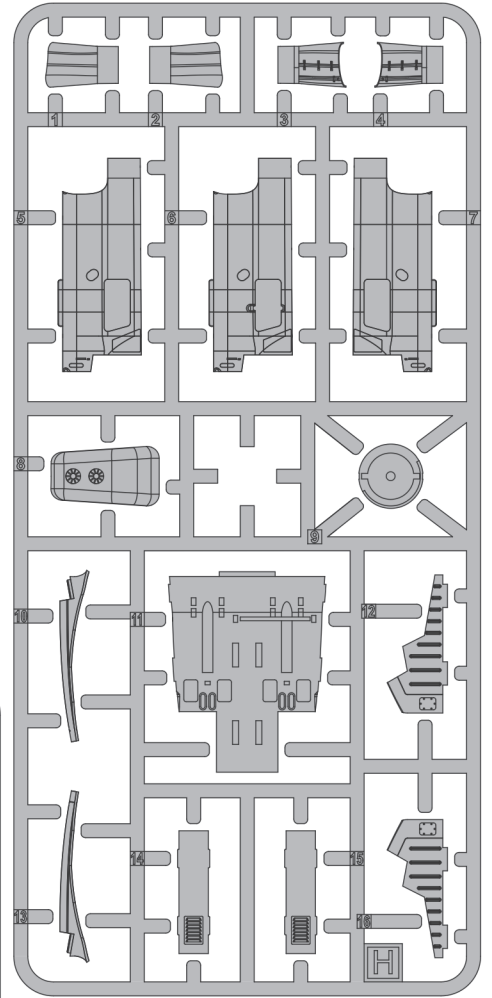
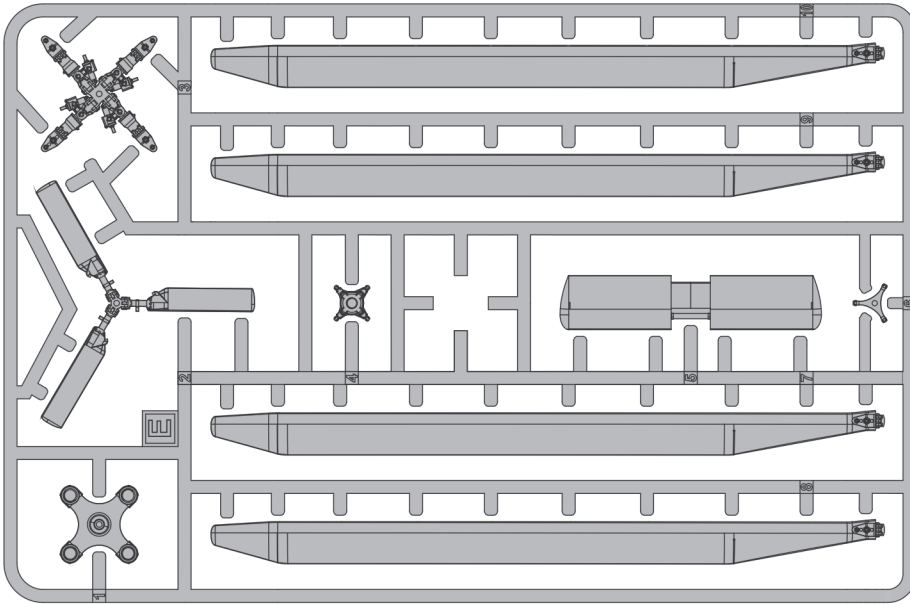
W-3T - 0209

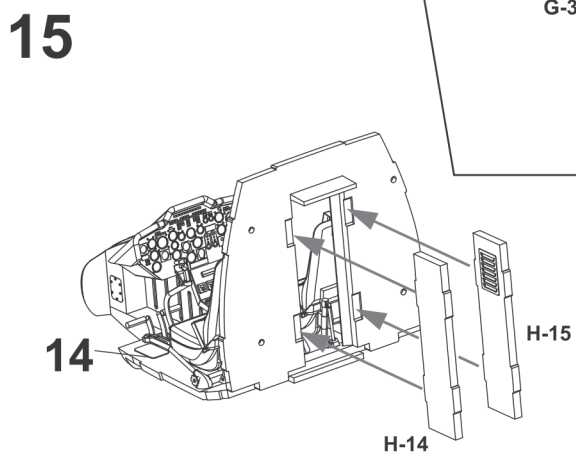
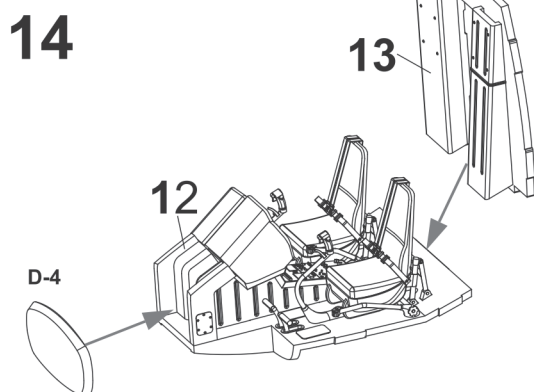
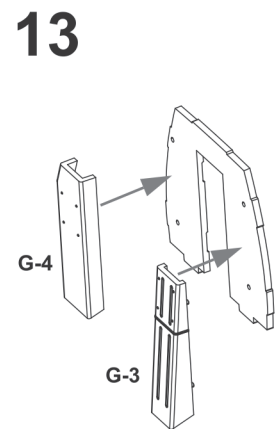
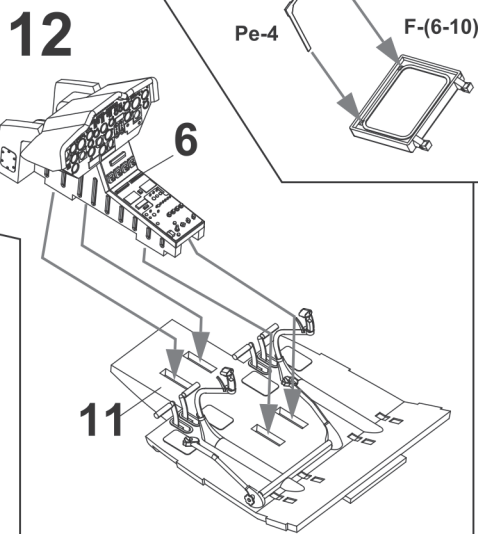
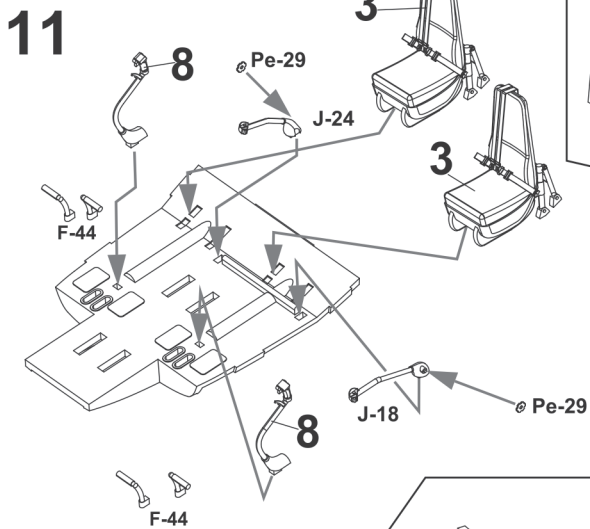
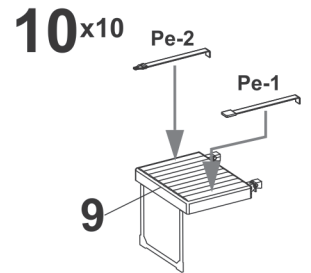
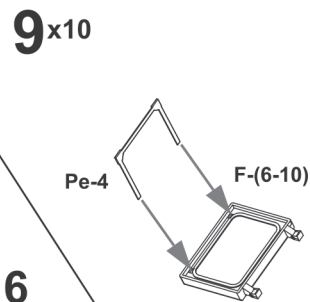
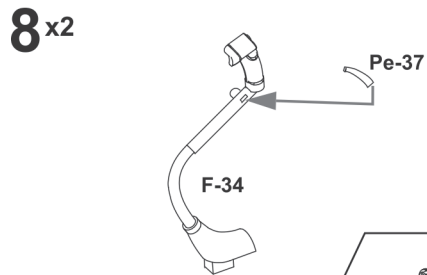
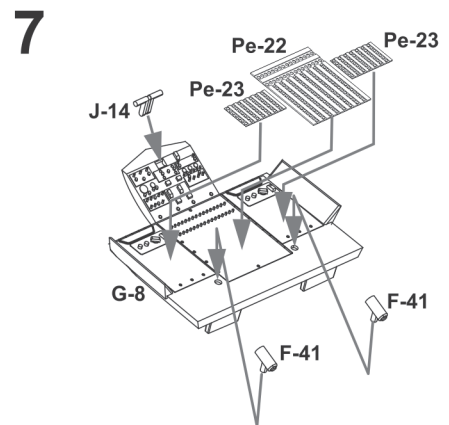
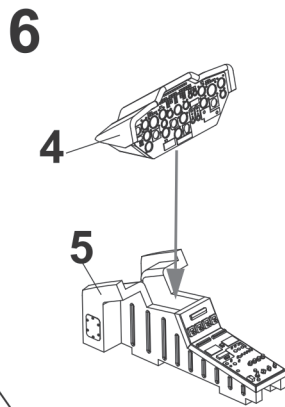
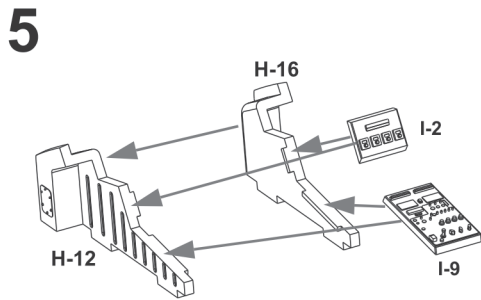
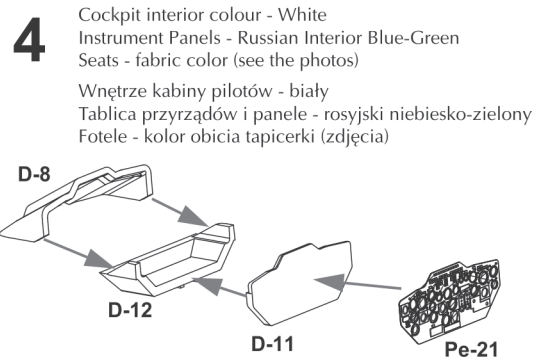
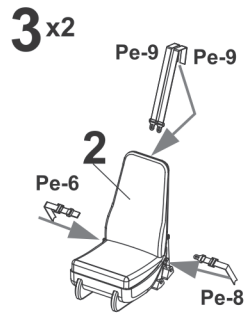
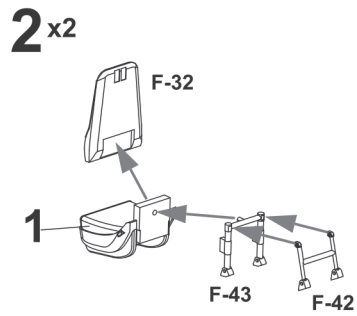
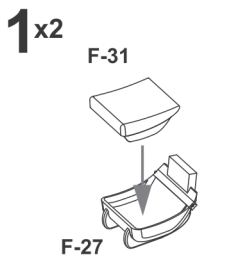
W-3T - 0304





x2

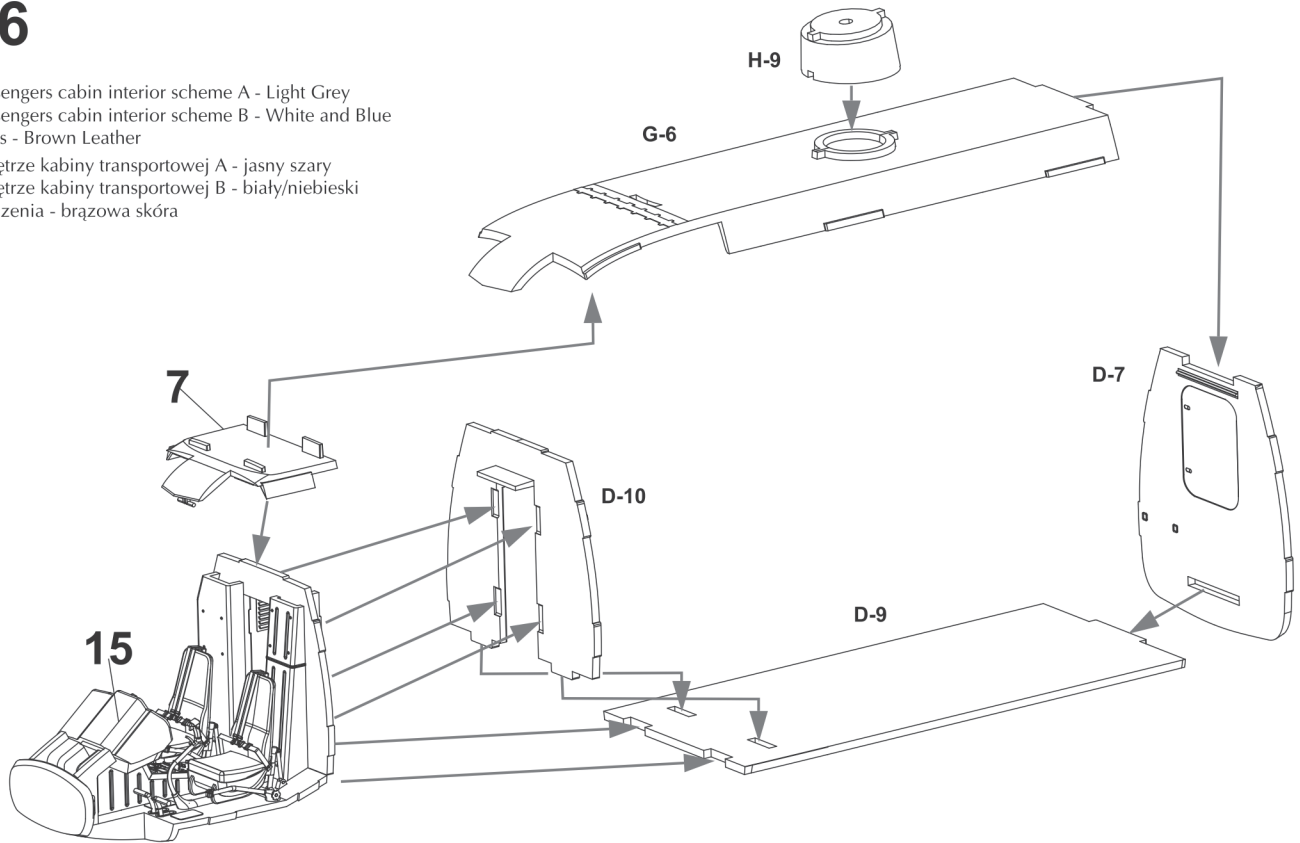




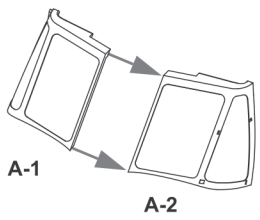
16

Passengers cabin interior scheme A - Light Grey
 Passengers cabin interior scheme B - White and Blue
 Seats - Brown Leather

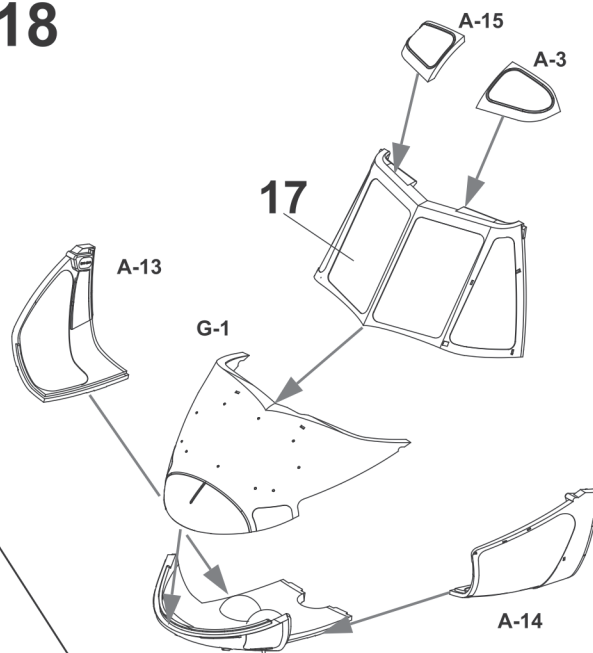
Wnętrze kabiny transportowej A - jasny szary
 Wnętrze kabiny transportowej B - biały/niebieski
 Siedzenia - brązowa skóra



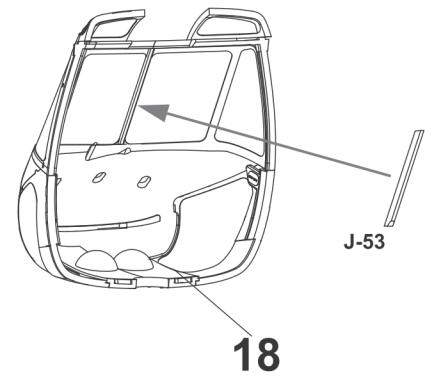
17



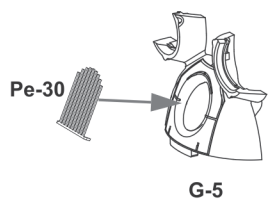
18



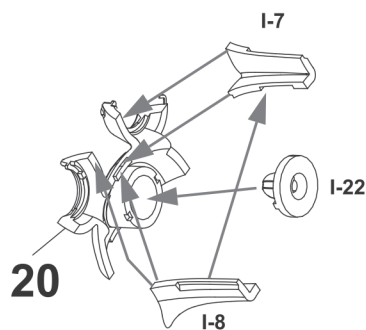
19



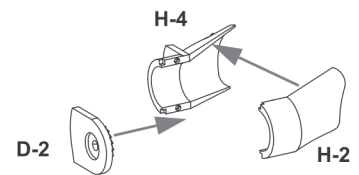
20



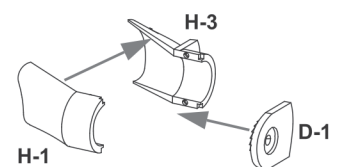
21



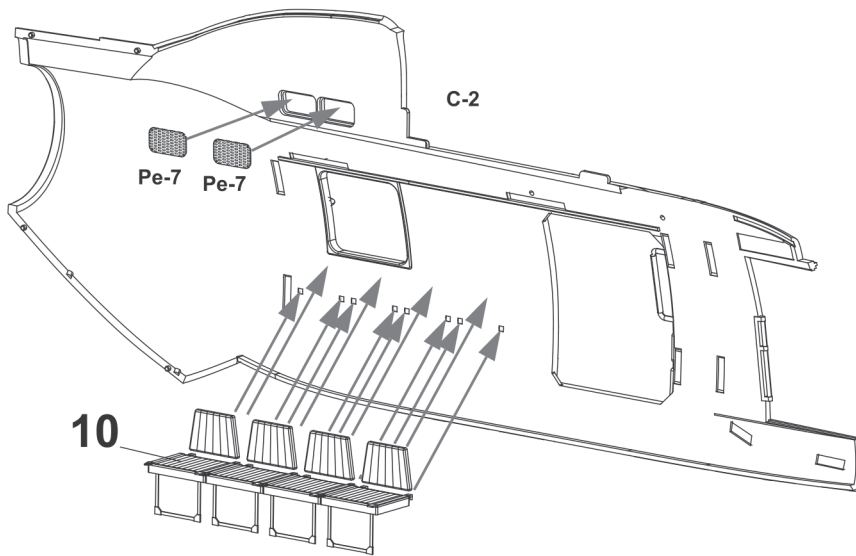
22



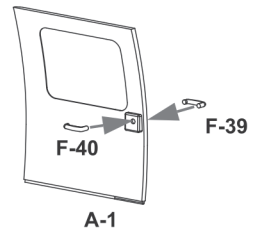
23



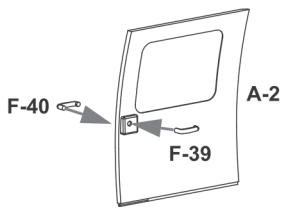
24



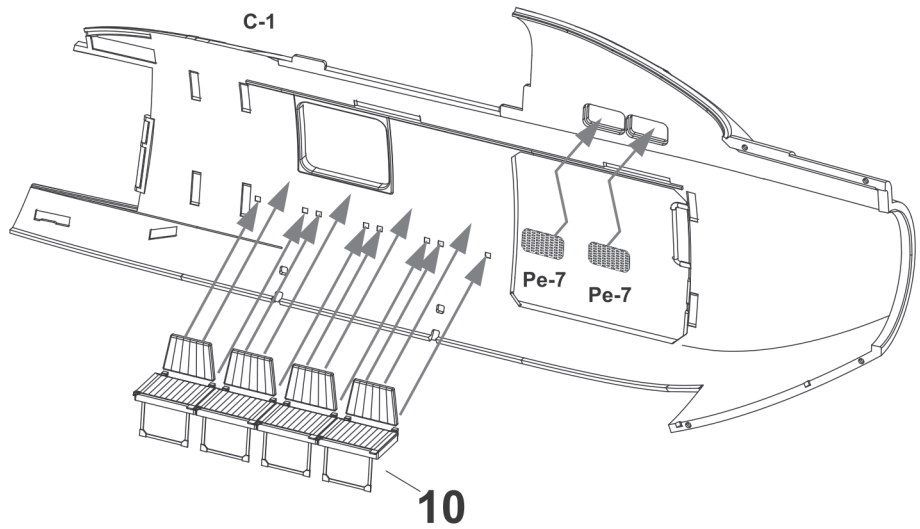
25



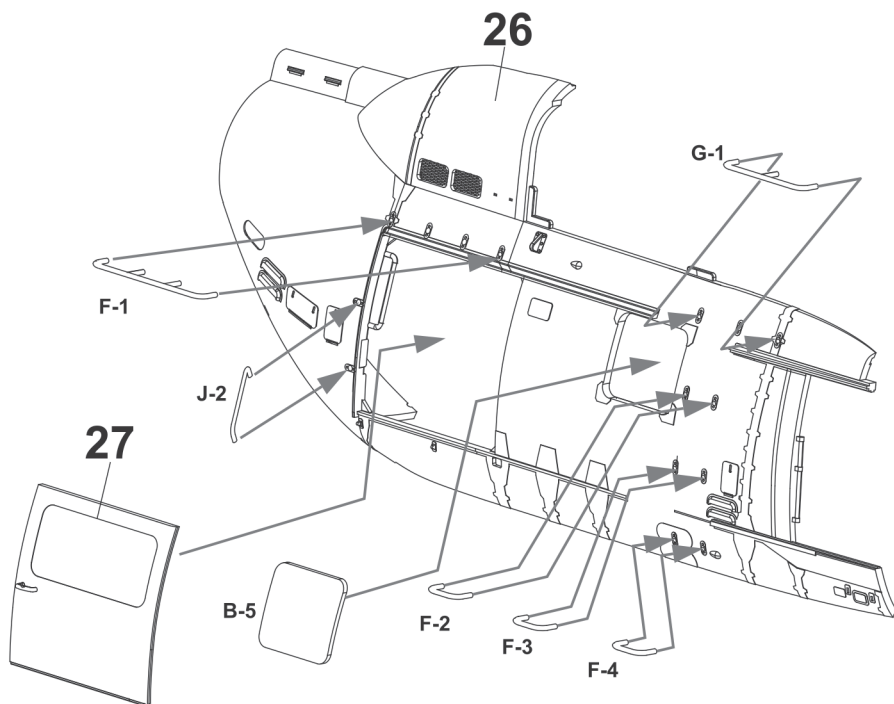
27



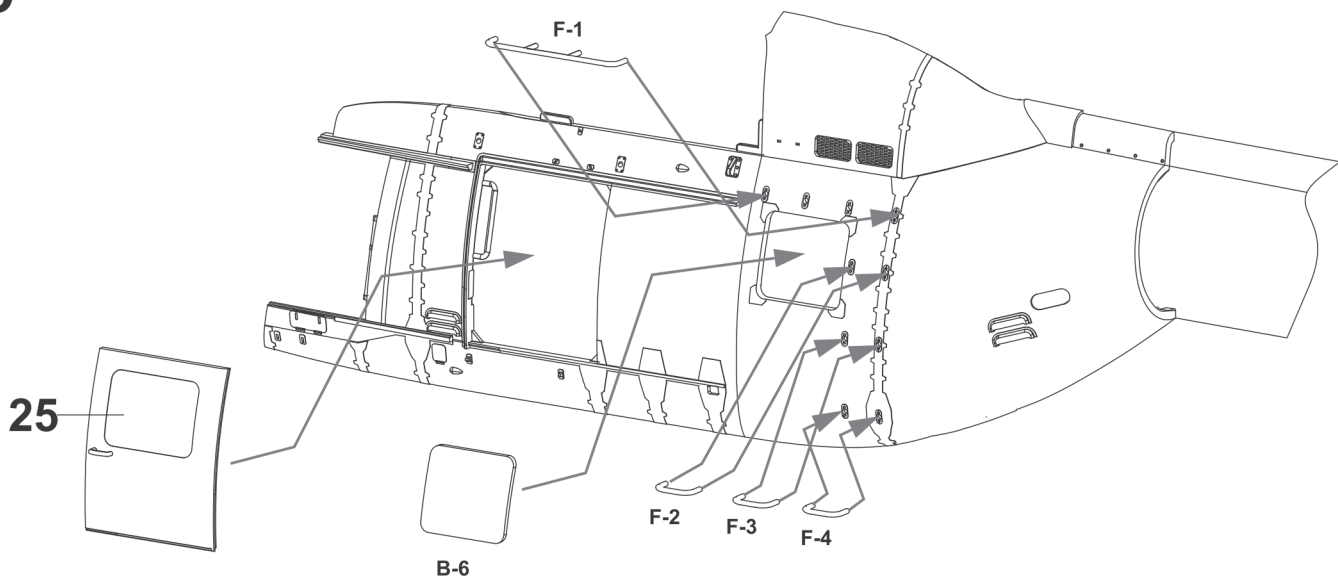
26



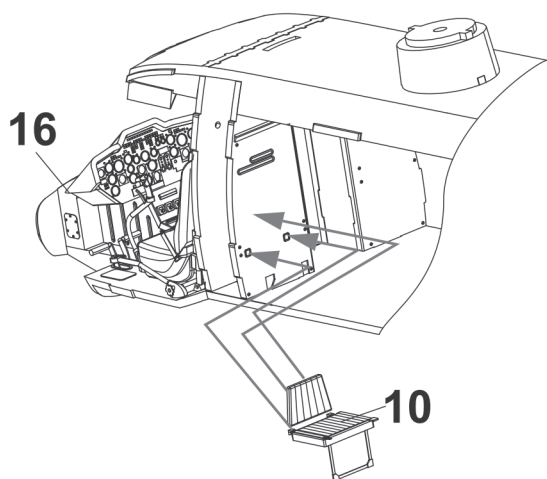
28



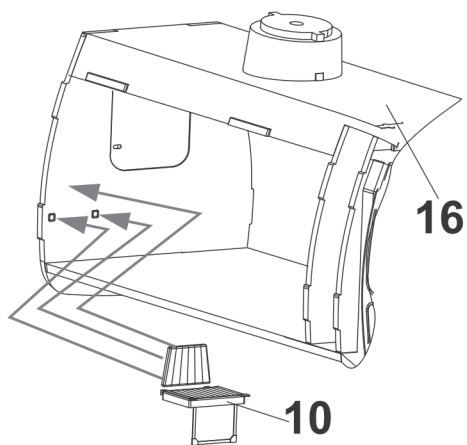
29



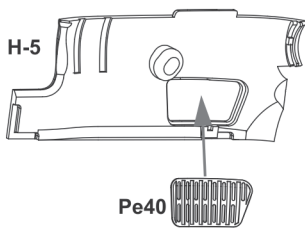
30



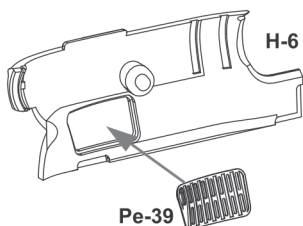
31



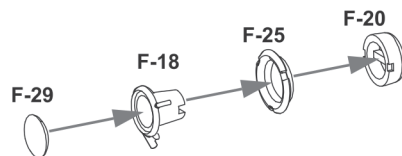
32



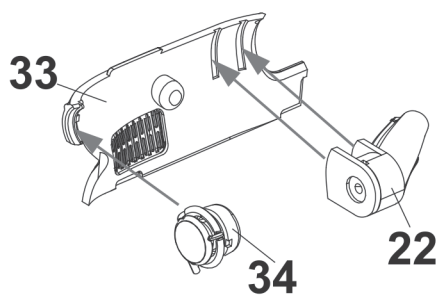
33



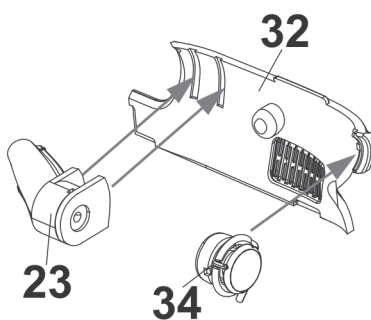
34 x2



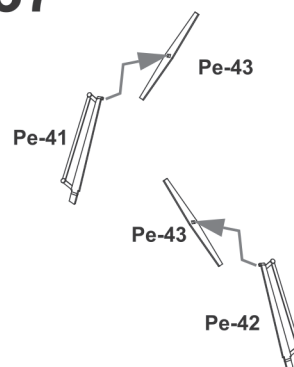
35



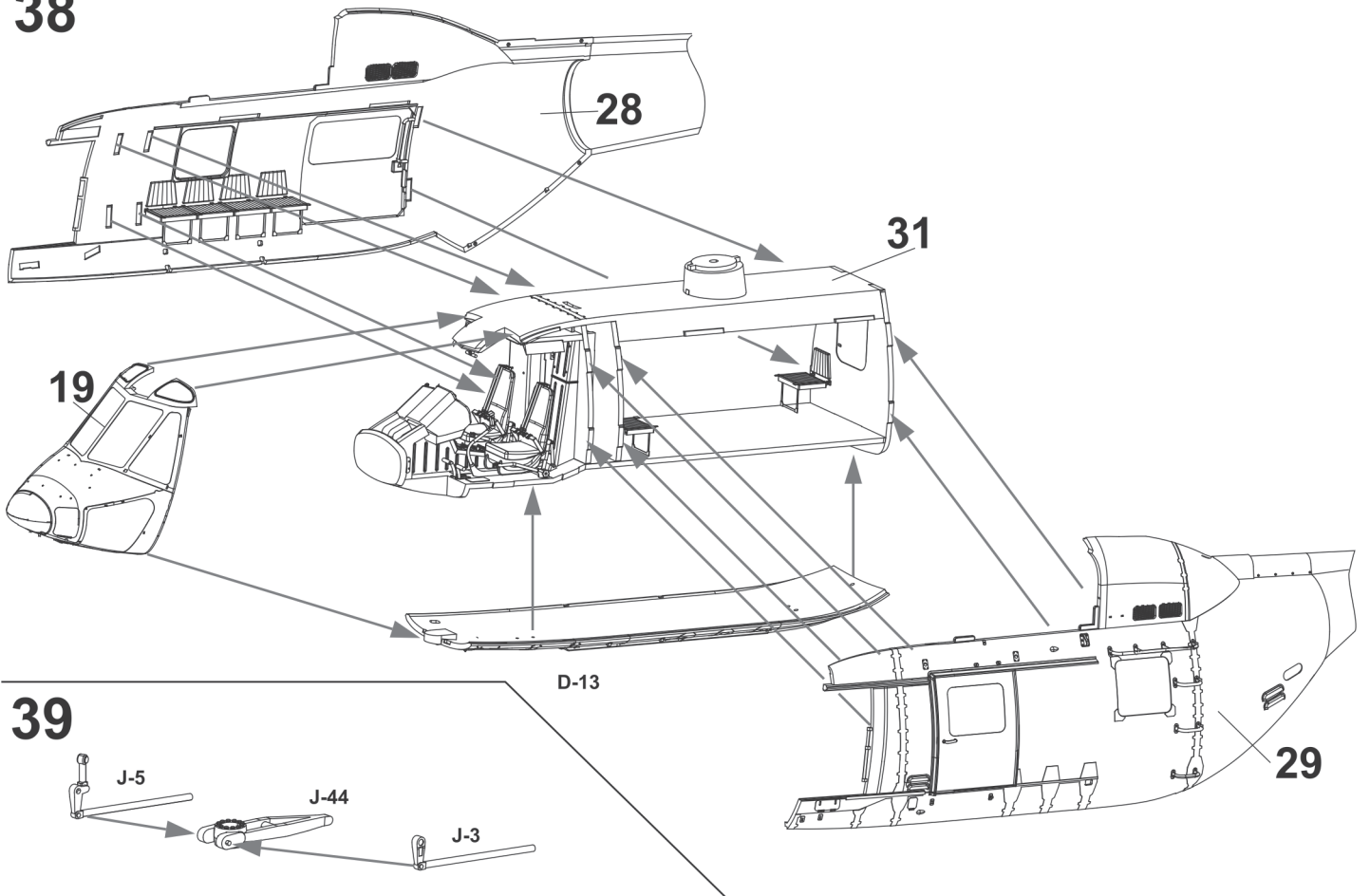
36



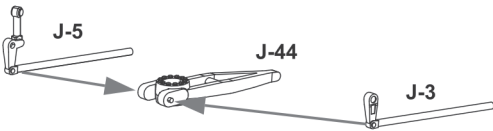
37



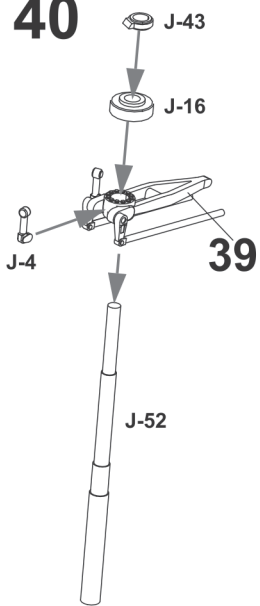
38



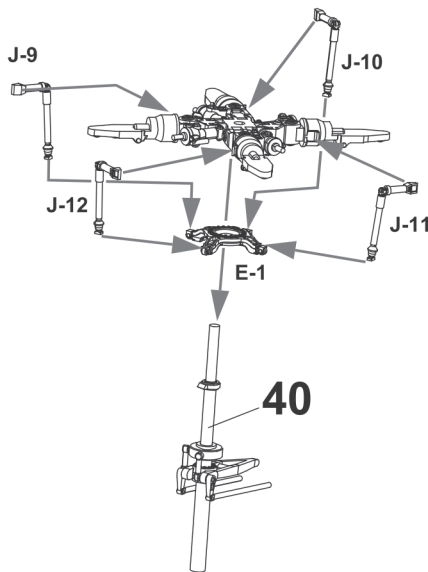
39



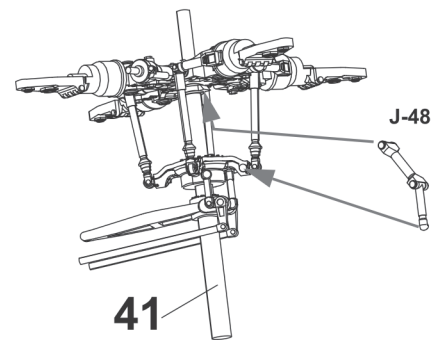
40



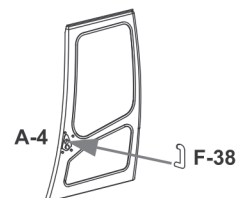
41



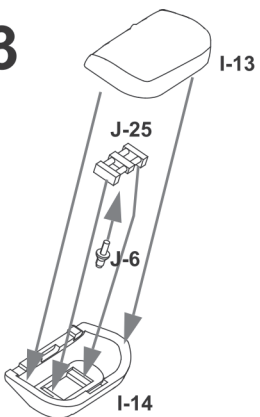
42



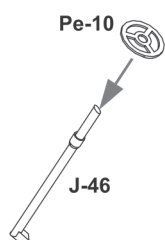
46



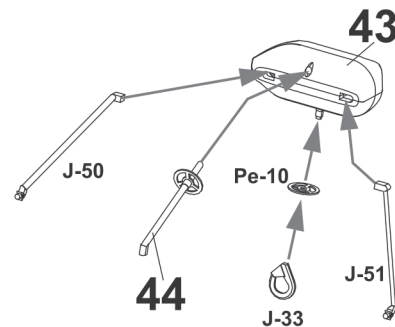
43



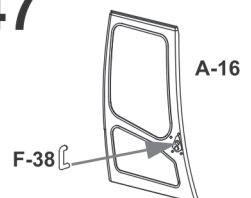
44



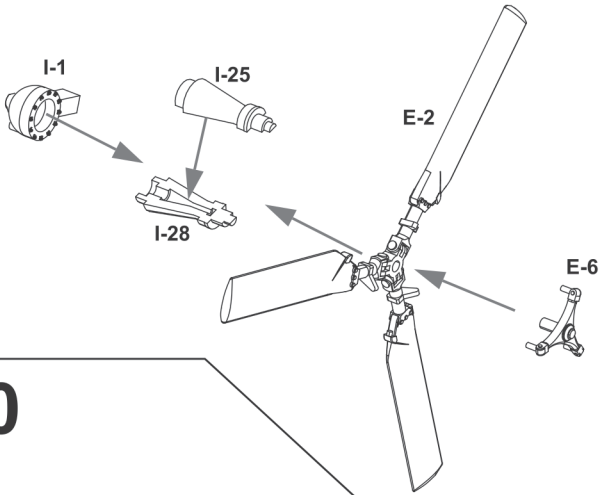
45



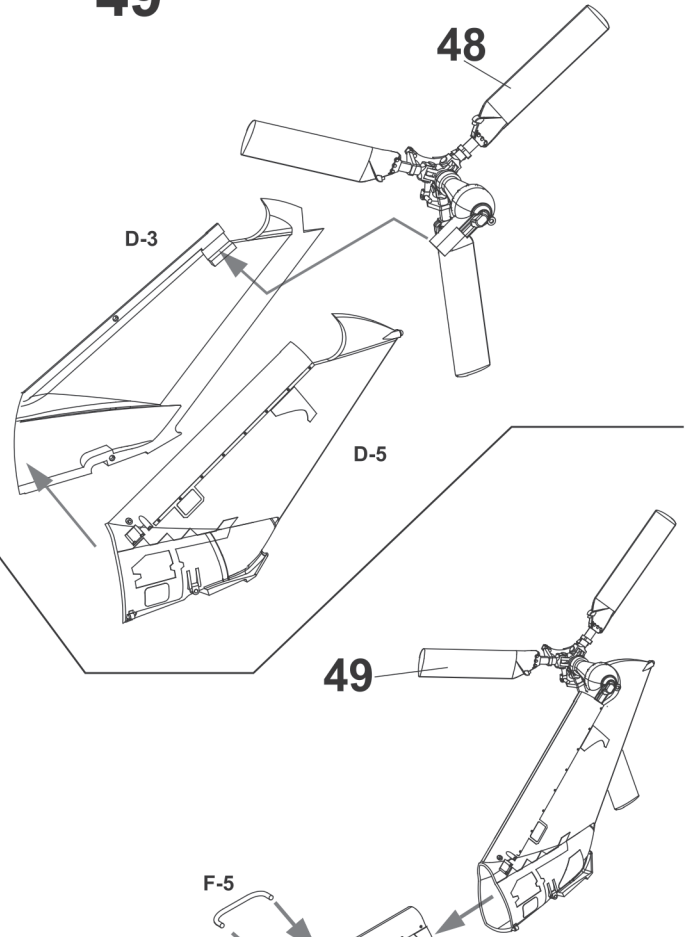
47



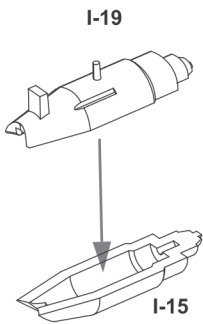
48



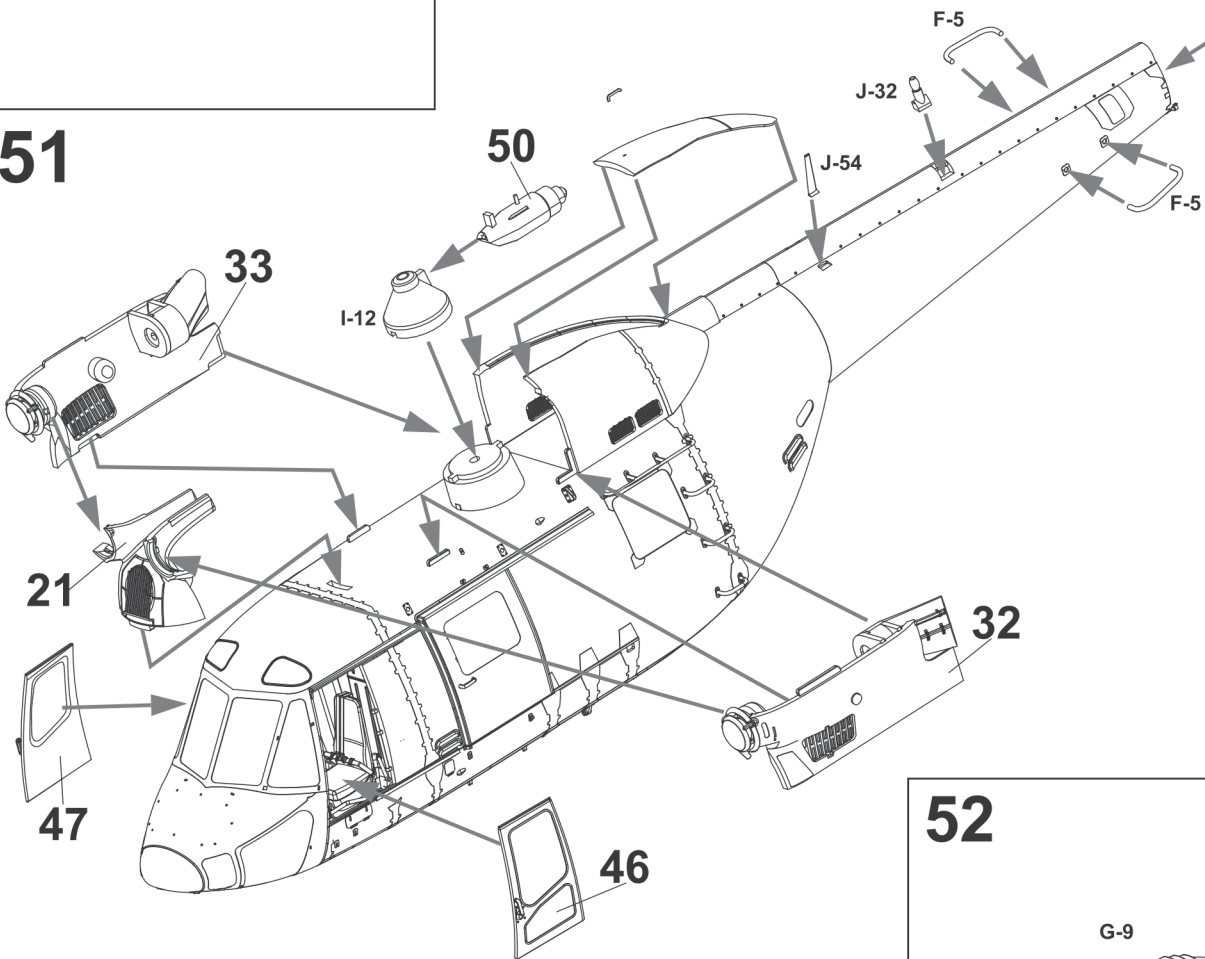
49



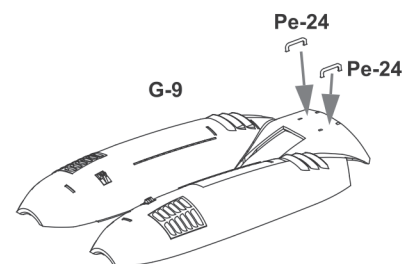
50



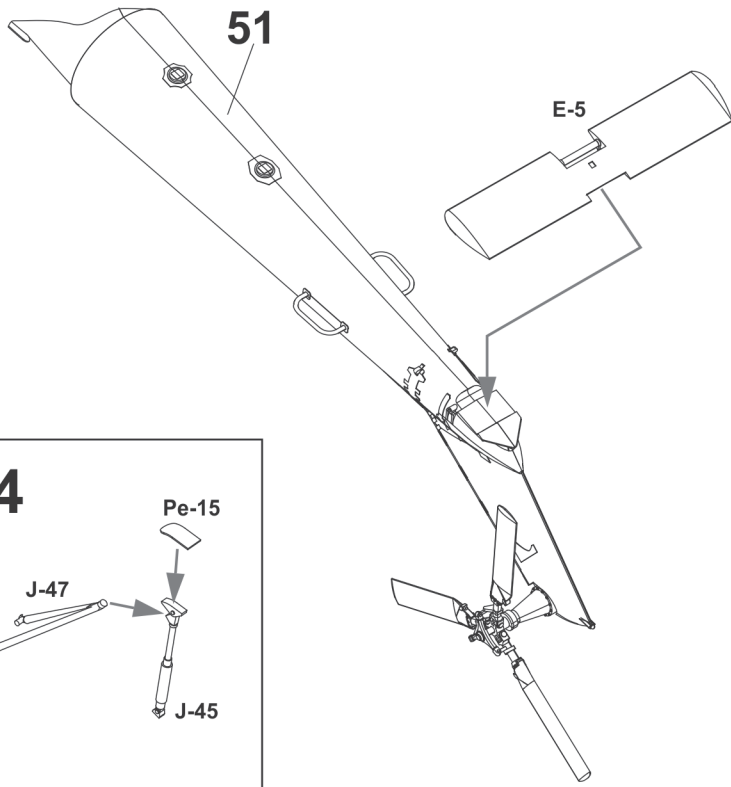
51



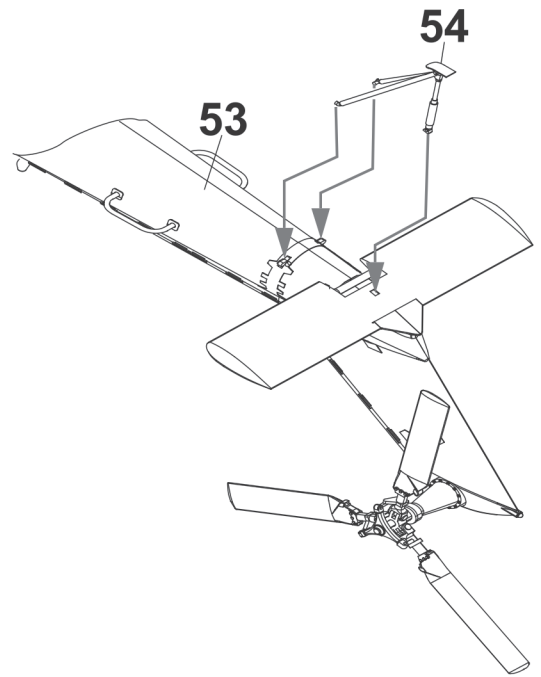
52



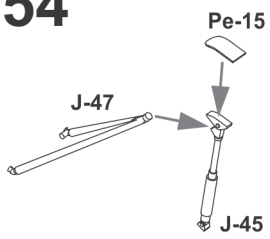
53



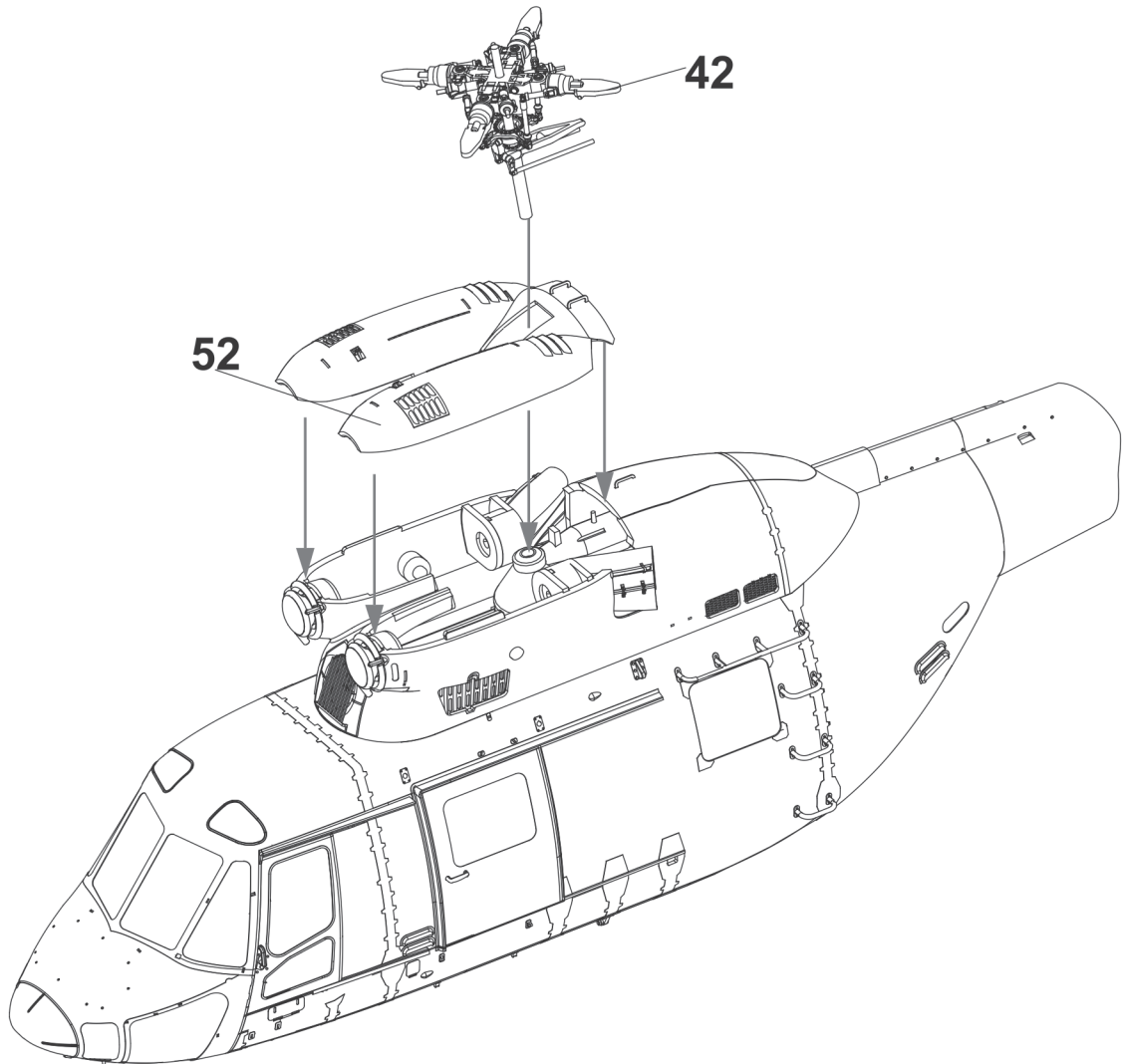
55

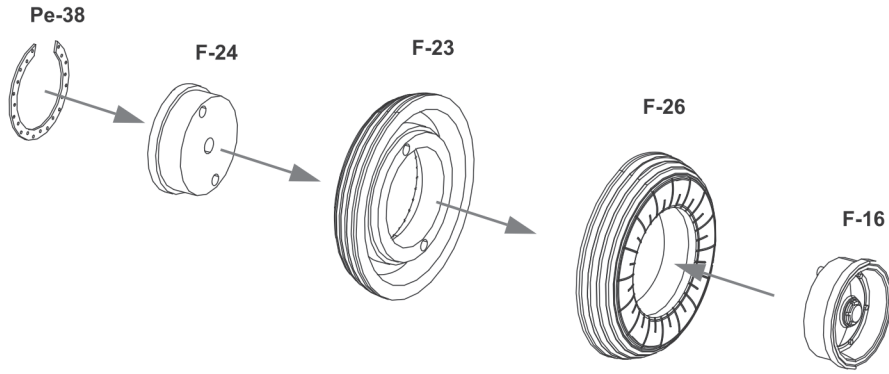


54

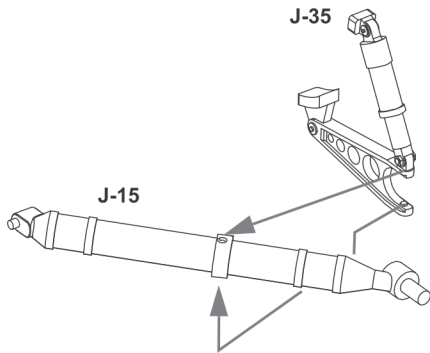


56

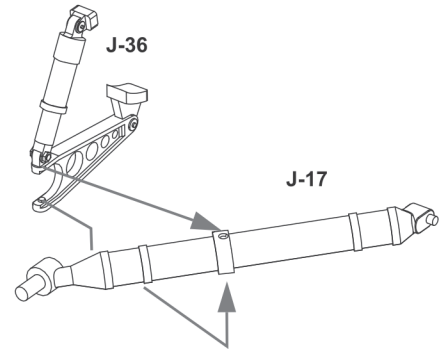




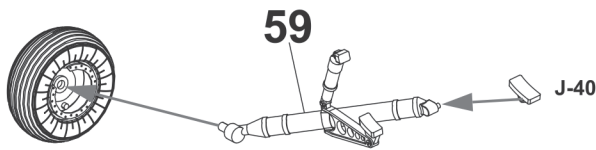
58



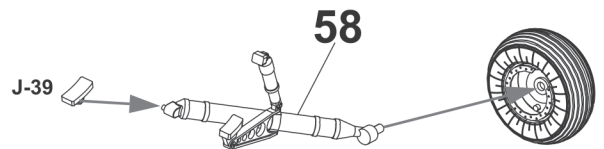
59



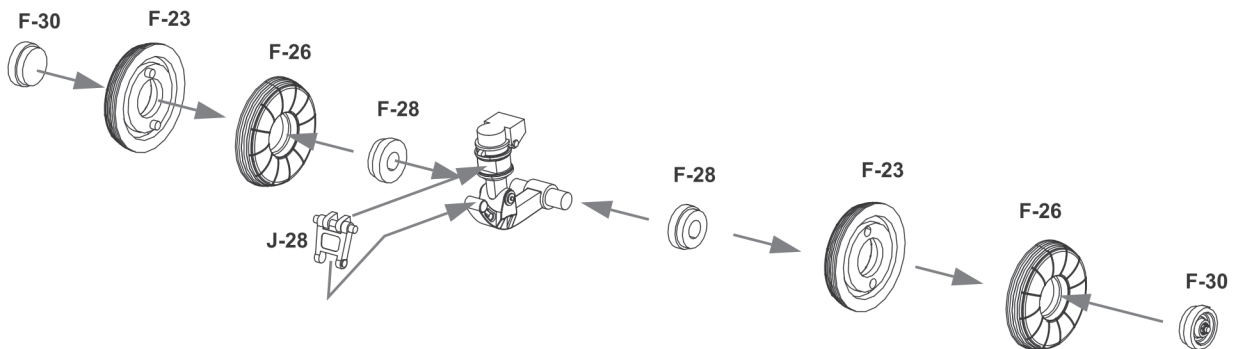
60



61



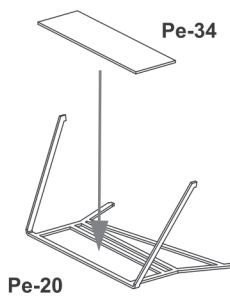
62



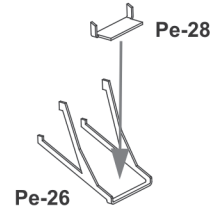
63



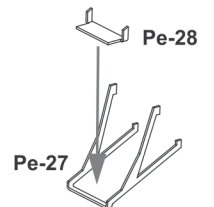
64

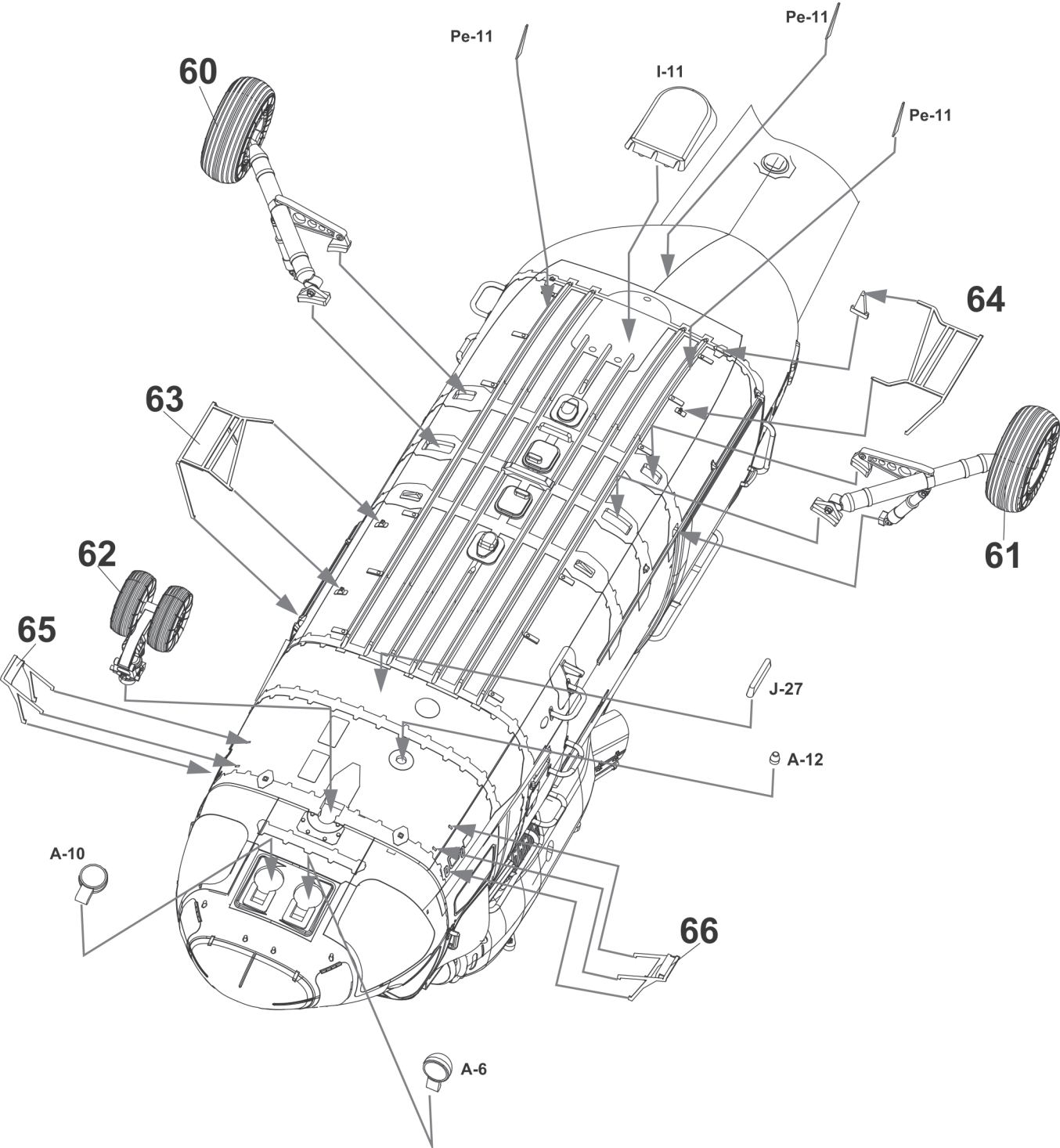


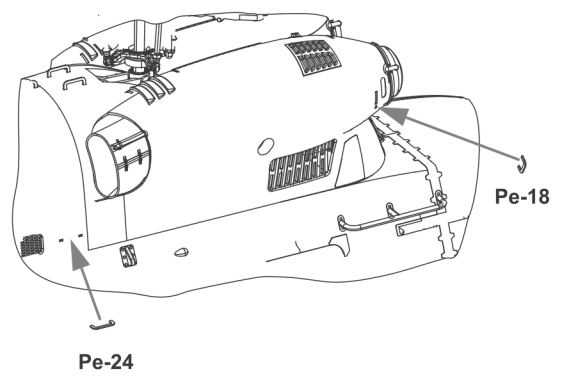
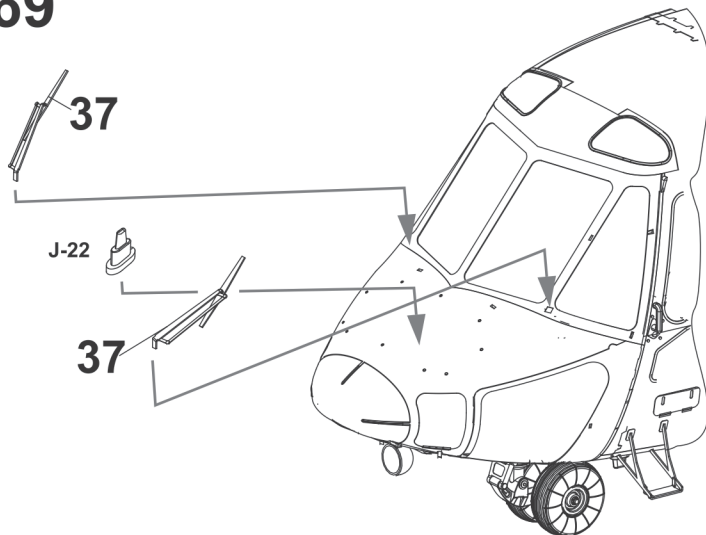
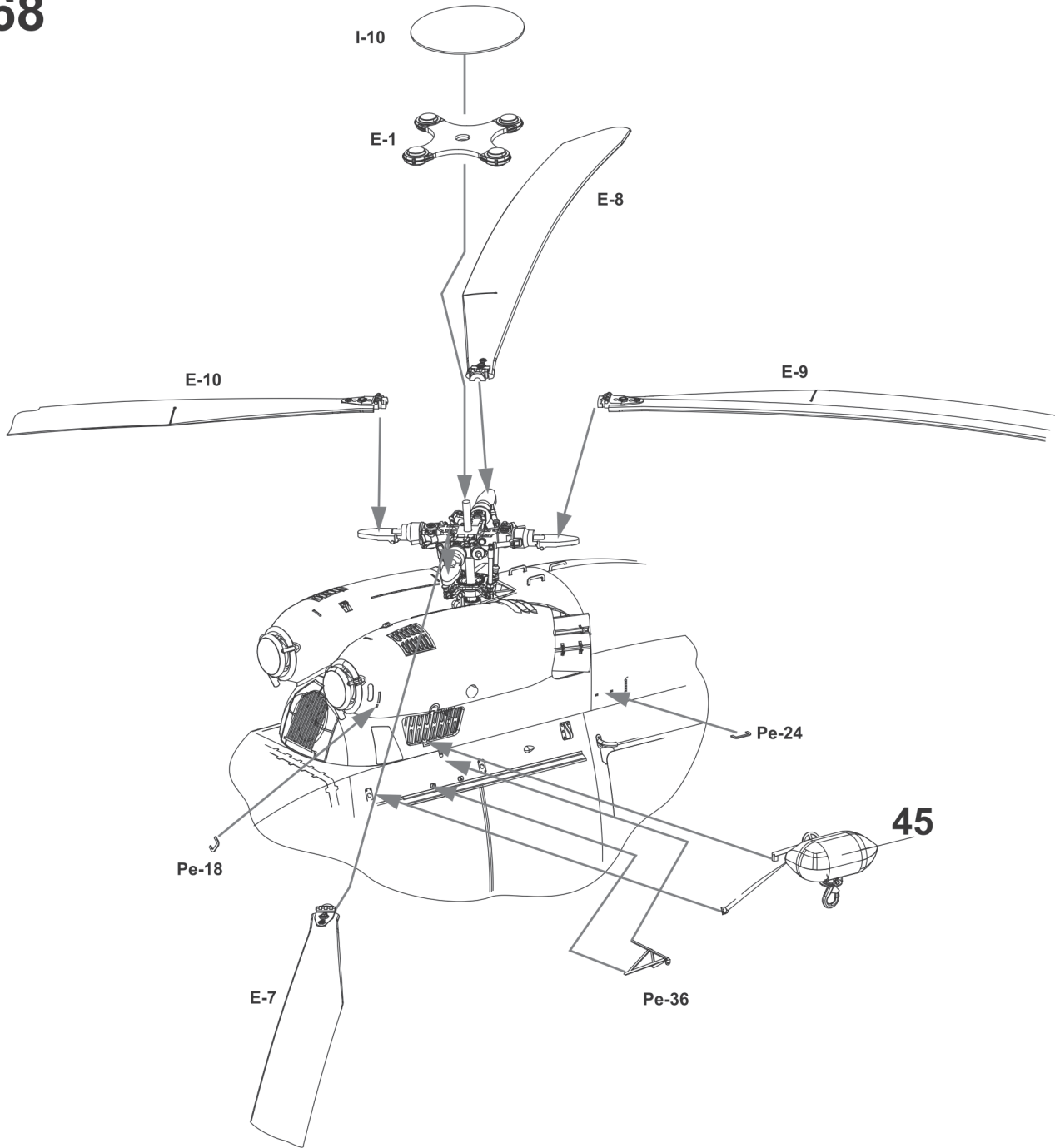
65

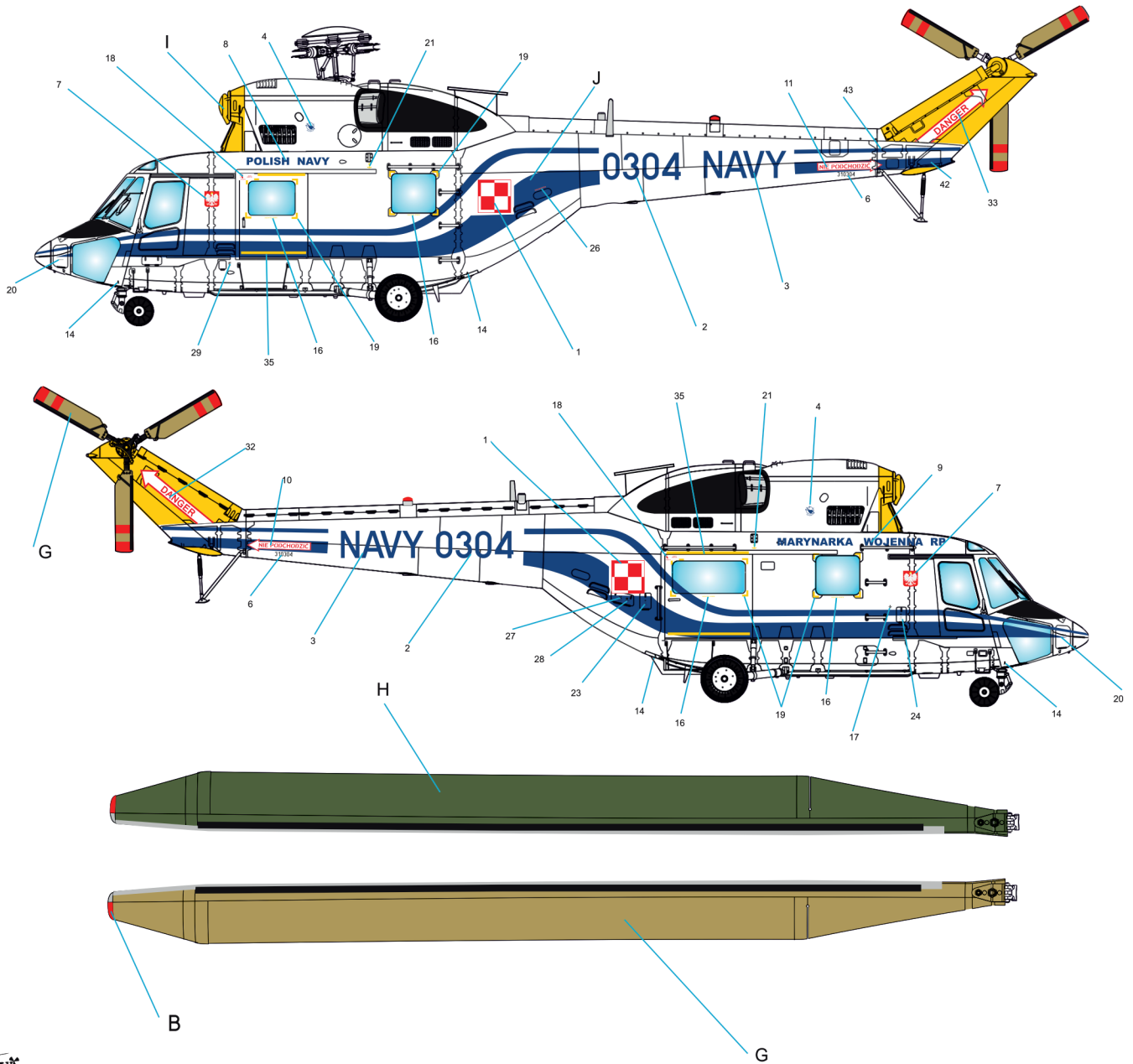


66









Adamski

Colors:

Tabela kolorów:

Hataka / Bilmodels / AK Real Color

A		White	HTK 101	B 051	RC004
B		FS 12197	HTK 276	B 078	RC005
C		Black	HTK 100	B 050	RC001
D		Steel	HTK 106	B 015	RC020
E		RAL 2008	HTK 705	B 321	-
F		RAL 5015	HTK 102	B 081	RC010
G		FS 20260	HTK 126	B 266	-
H		FS 24108	HTK 063	B 073	RC232
I		RAL 1007	HTK 134	B 322	RC267
J		RAL 5002	HTK 272	B 098	-



Foto: Tomasz Bilkiewicz



